

Timber Ridge Plan 603

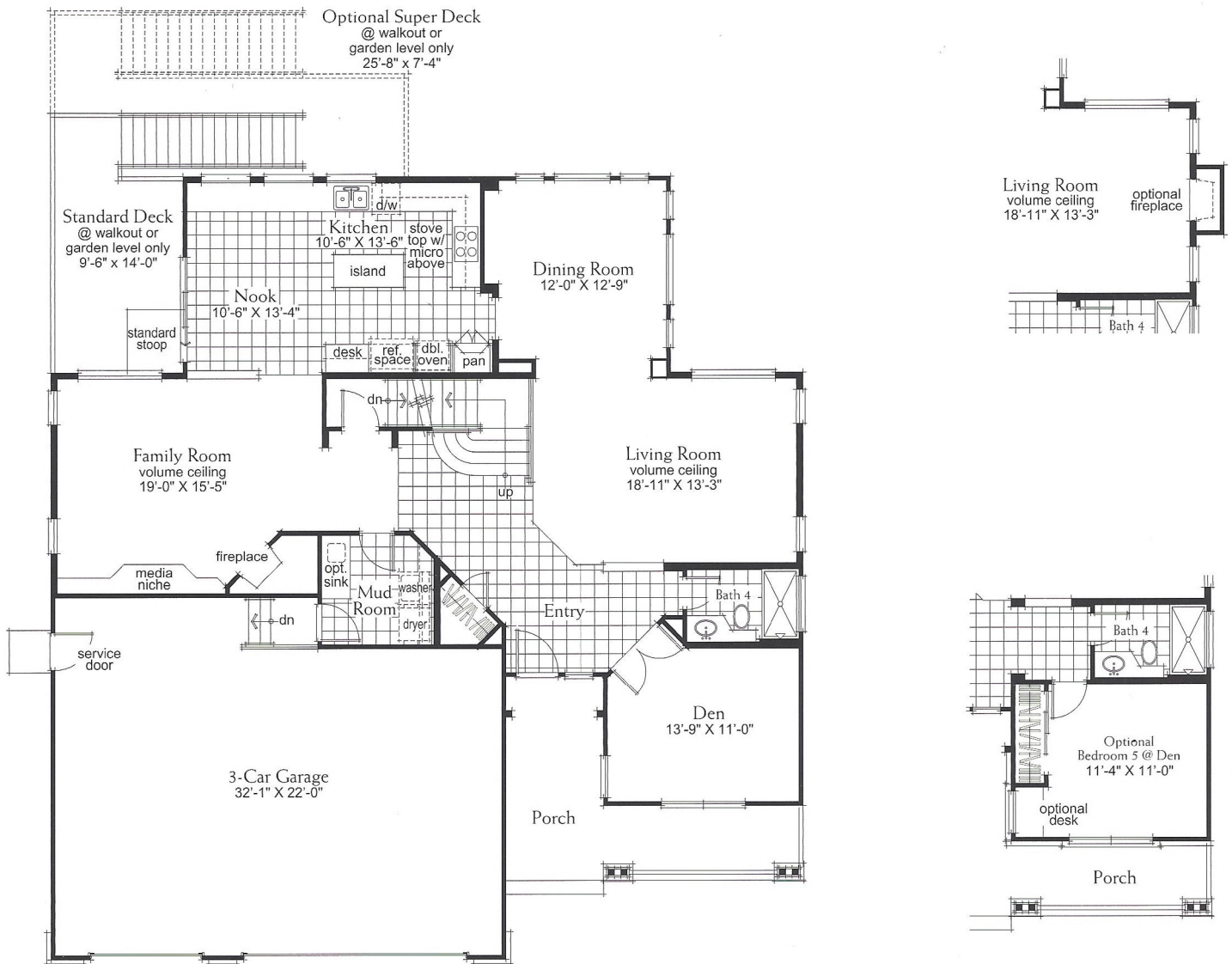
SQUARE FOOTAGE

Total: 3,098 Basement: 1,084 Optional: 192-197



Elevation A

This exquisite 3,098 square foot home features 4 spacious bedrooms and 3-3/4 baths. The adjoining formal living and dining rooms provide an elegant space for entertaining, while the oversized family room with fireplace and private den offer a gathering space rare to many homes. A 3-car garage and a 1,084 square foot unfinished partial basement are standard features in the Timber Ridge. In addition, a choice of several options for a second floor bedroom will add an extra 192 square feet, while an optional master retreat will add 197 square feet to this home.



First Floor

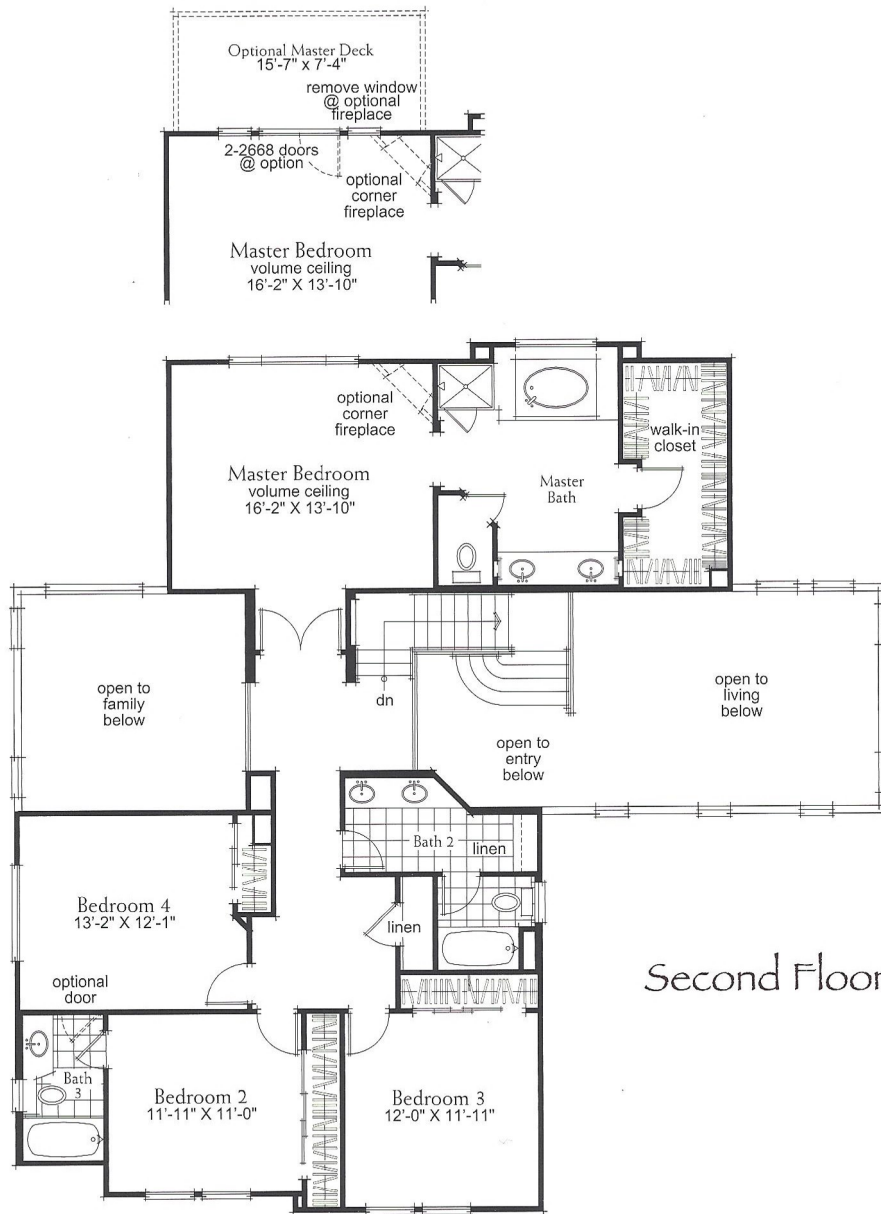


Elevation B

Timber Ridge



Elevation C



Second Floor

