

Cherrywood

Plan 505

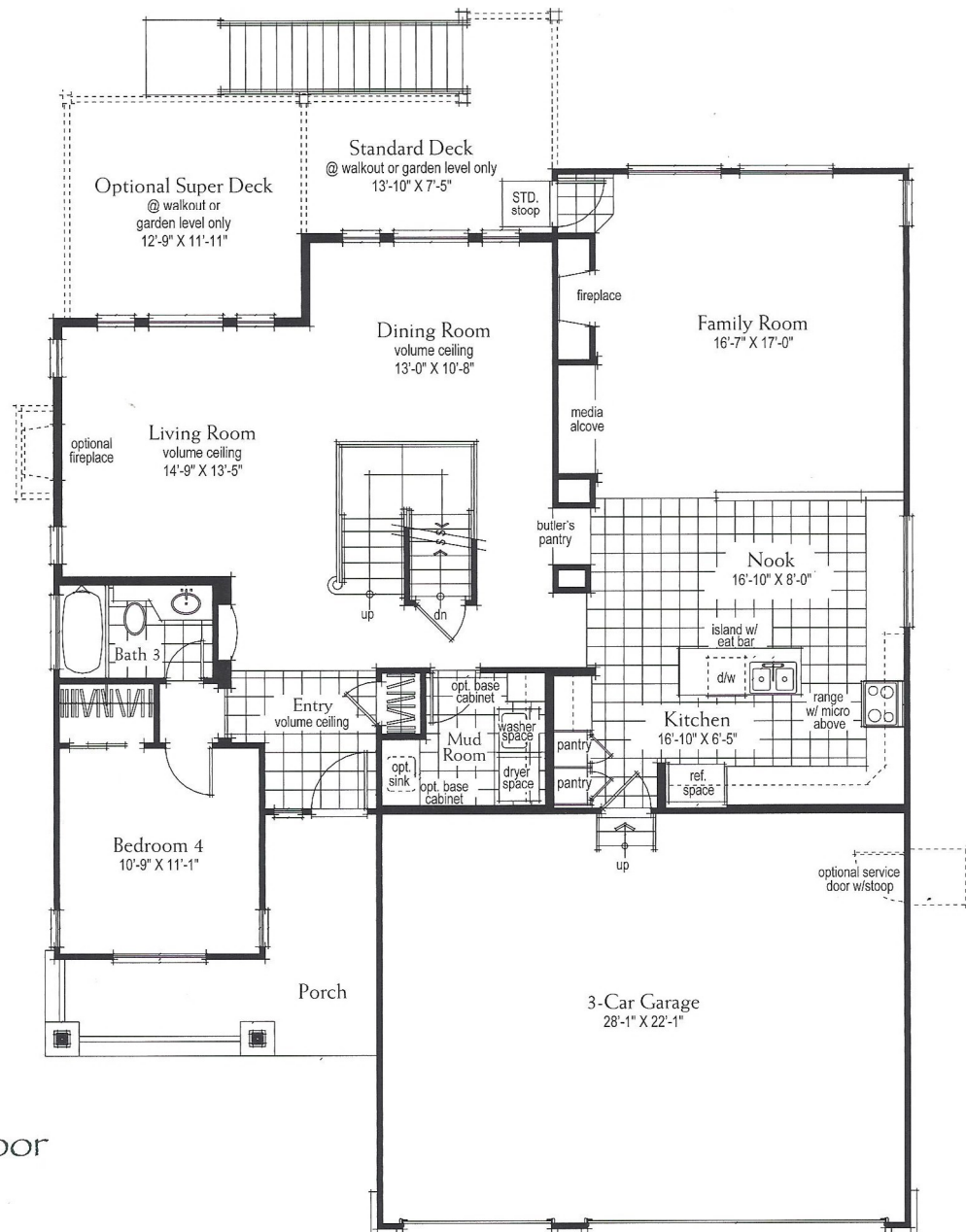
SQUARE FOOTAGE

Total: 2,894 Basement: 798 Optional: 12

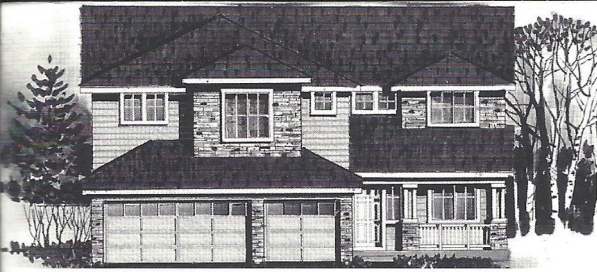
This incredible 2,894 square foot two-story home offers 4 bedrooms and a bonus room which can be converted to a fifth bedroom. This spacious plan features formal living and dining rooms, and a family room with a fireplace and entertainment niche. Special features in the kitchen include an island and nook. With 3 baths and a standard 3-car garage, this home also features a 798 square foot unfinished partial basement.



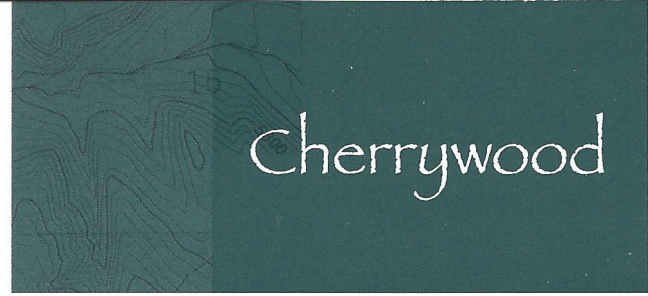
Elevation A



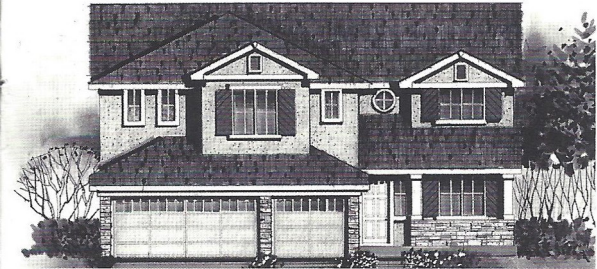
First Floor



Elevation B



Cherrywood



Elevation C



Second Floor

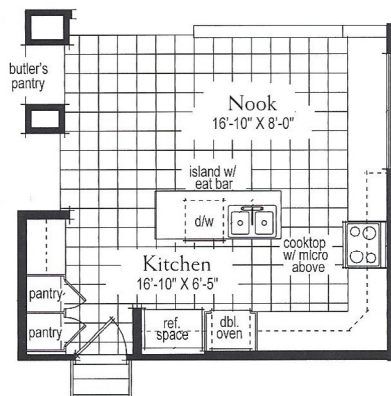
Cherrywood

Plan 505

SQUARE FOOTAGE

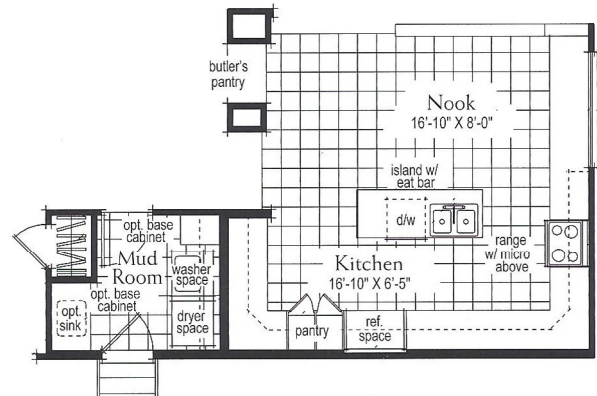
Total: 2,894 Basement: 798

Optional Gourmet Kitchen



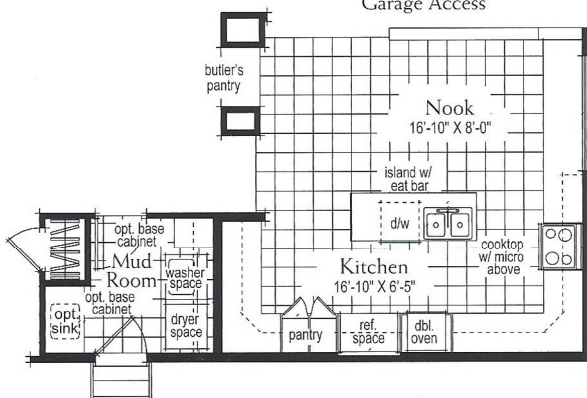
3-Car Garage

Optional Kitchen/
Alt. Garage Access



3-Car Garage

Optional Gourmet Kitchen @
Enhanced Kitchen/Alt.
Garage Access



3-Car Garage

Kitchen Options