

Edgewood Plan 504

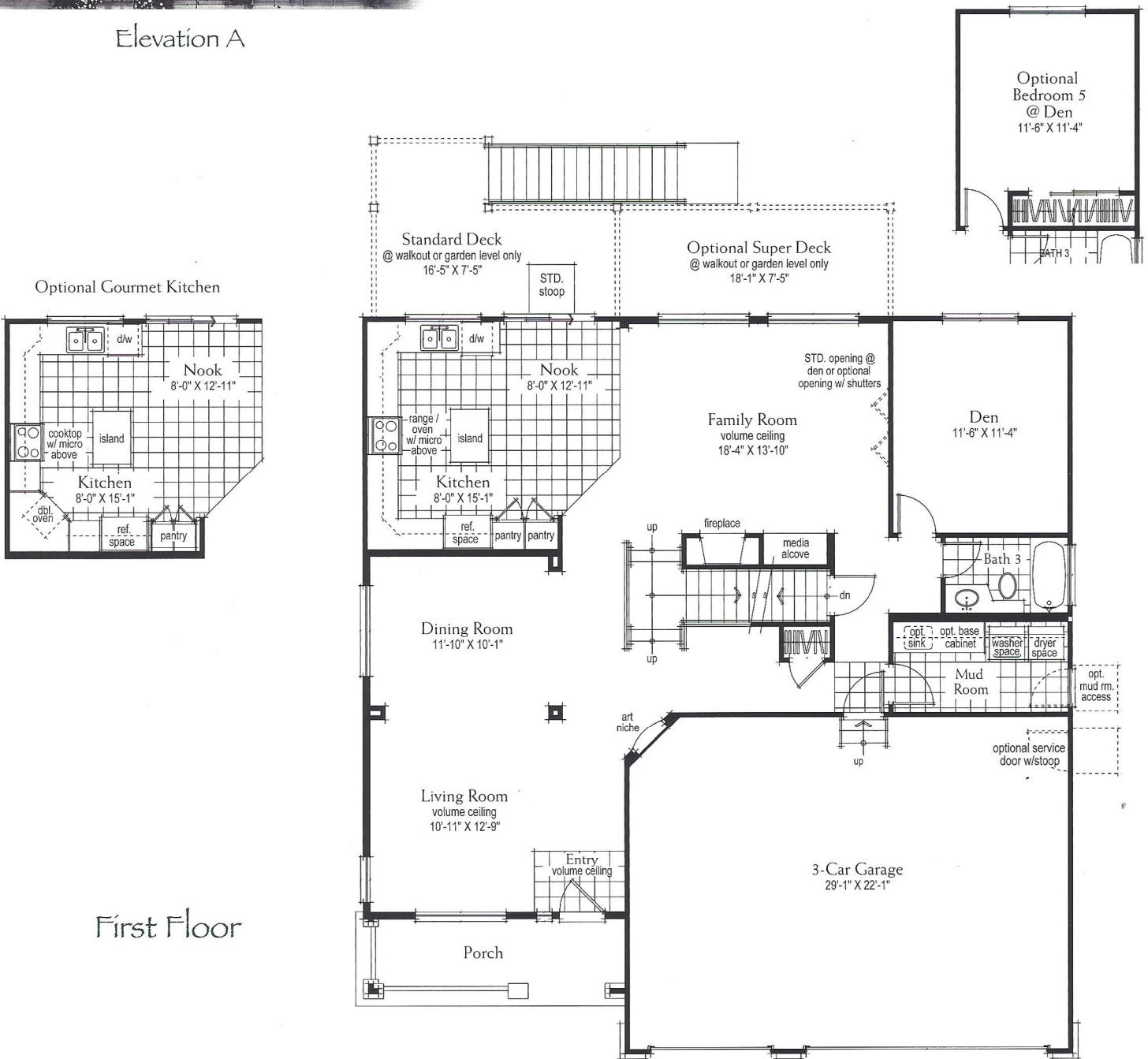
SQUARE FOOTAGE

Total: 2,667 Basement: 844 Optional: 213

This fantastic 2,667 square foot two-story home features 4 bedrooms and a main floor den with the option of converting the den to a fifth bedroom. Also featured in the Edgewood are formal living and dining rooms, a spacious family room with fireplace and entertainment niche, and an open kitchen with an island and nook. With 3 baths and a standard 3-car garage, this home also features an 844 square foot unfinished partial basement.



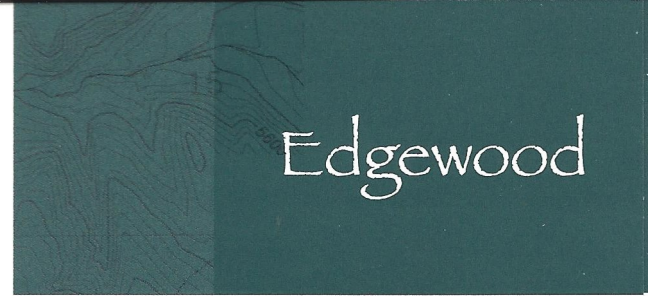
Elevation A



First Floor



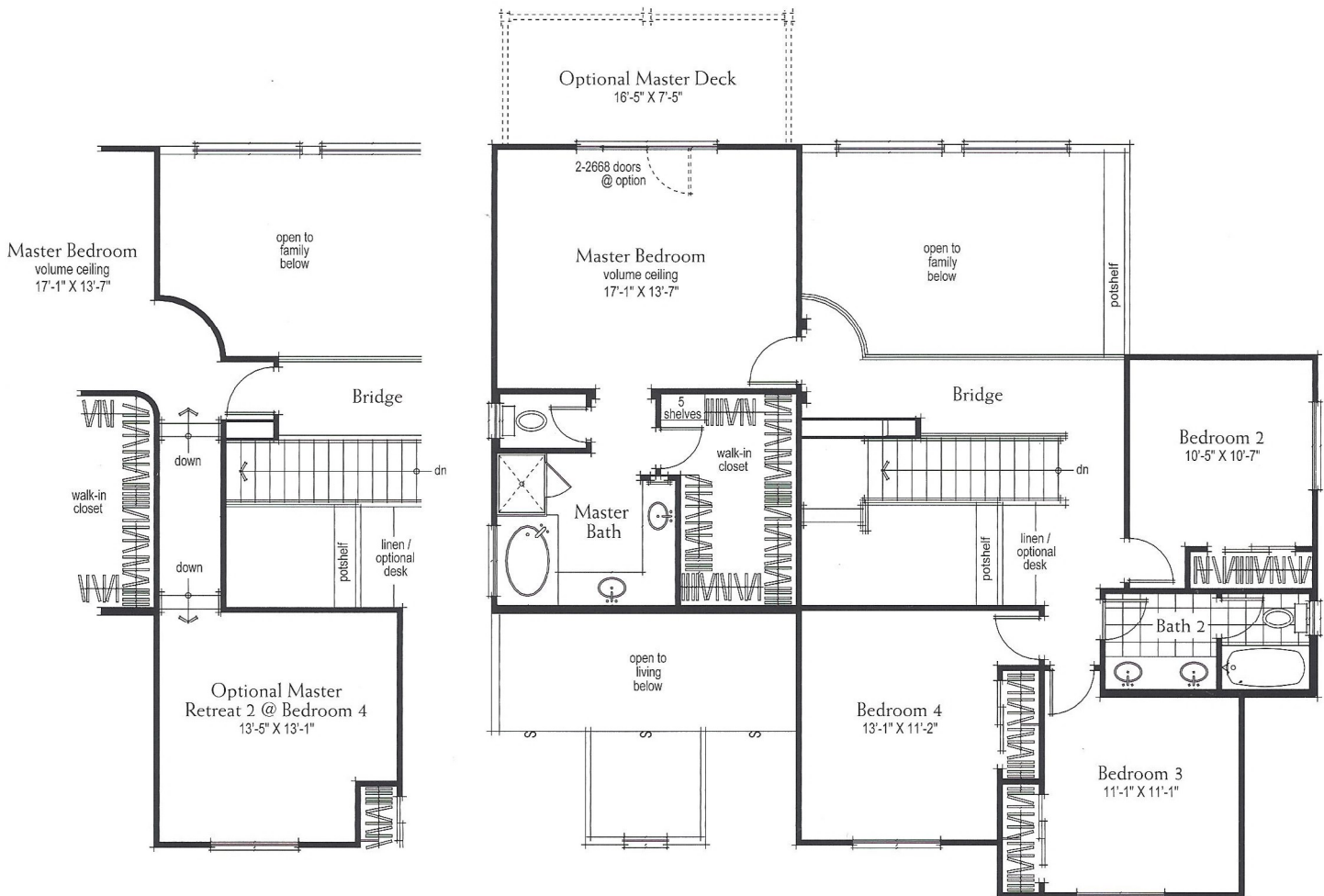
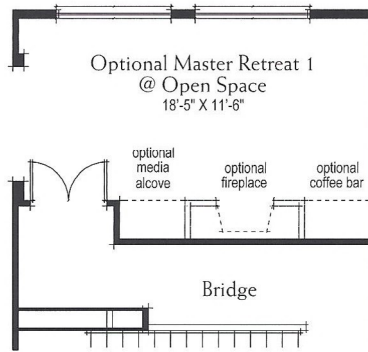
Elevation B



Edgewood



Elevation C



Second Floor