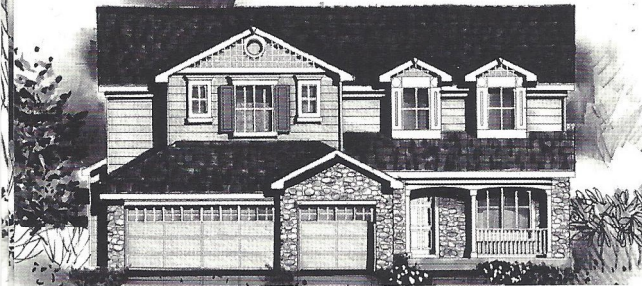


Rosewood

Plan 503

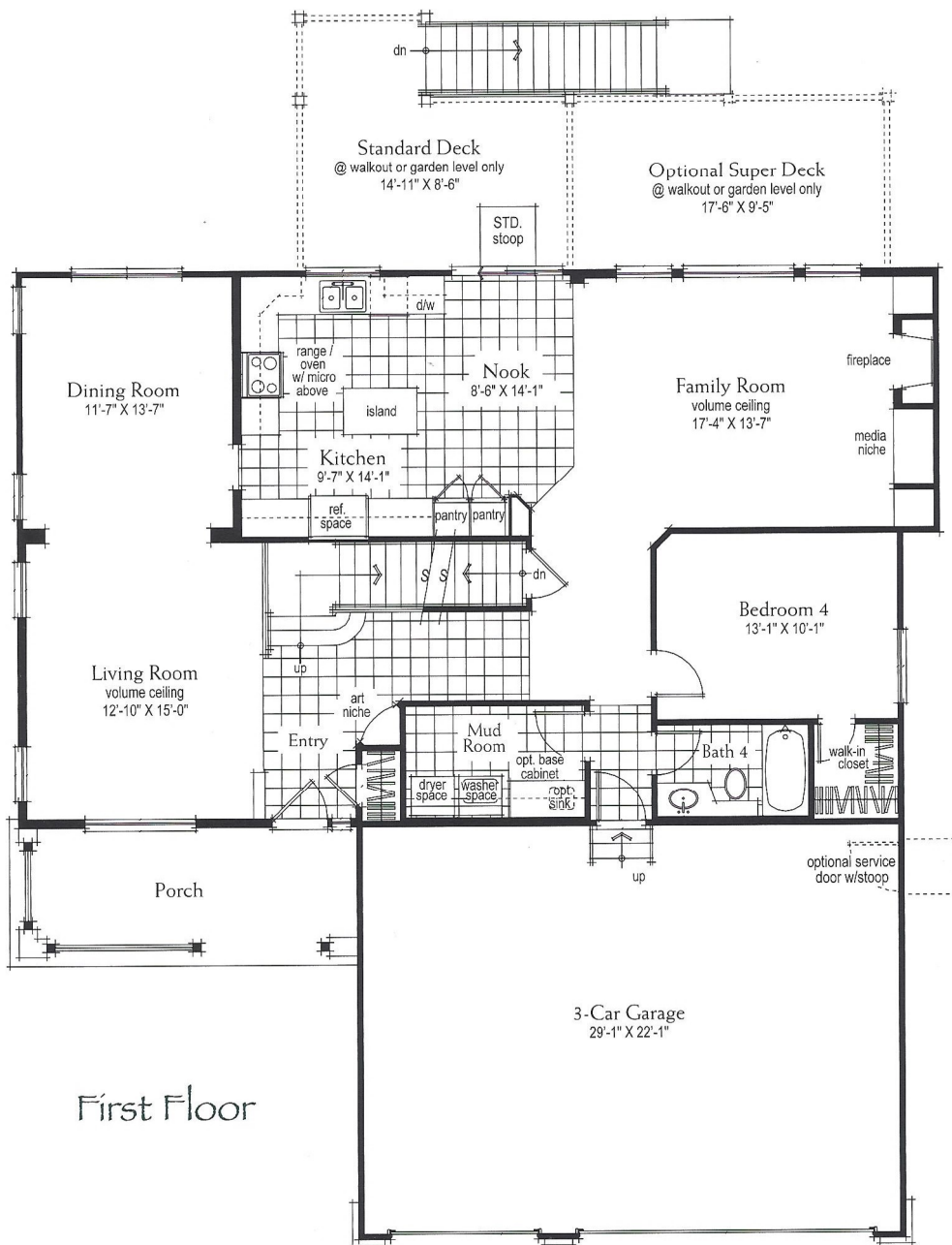
SQUARE FOOTAGE

Total: 2,567 Basement: 751 Optional: 226



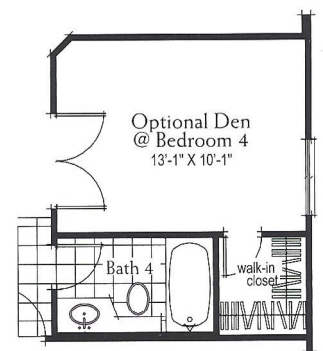
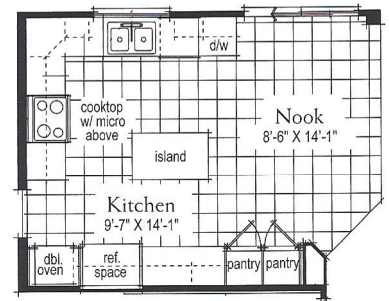
Elevation A

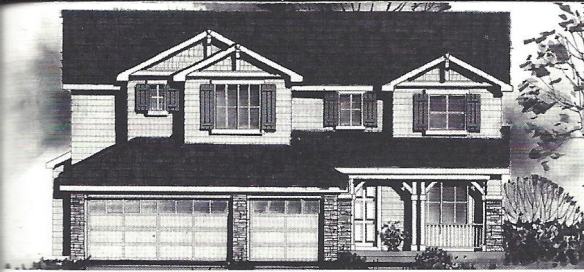
The Rosewood is an extraordinary 2,567 square foot two-story home featuring 4 bedrooms. An option is available to convert the fourth bedroom to a den. The formal living and dining room along with the family room and its fireplace and entertainment niche provide incredible space for family as well as entertaining. The spacious kitchen includes an island and nook. With 3 baths and a standard 3-car garage, this home also features a 751 square foot unfinished partial basement.



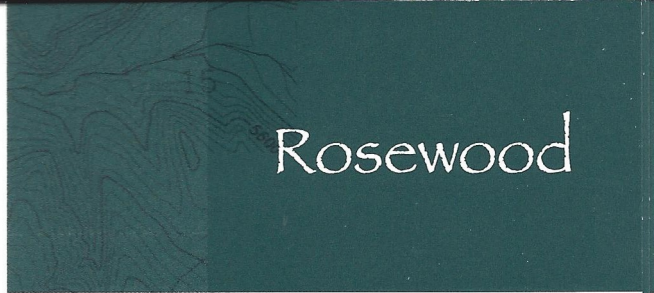
First Floor

Optional Gourmet Kitchen





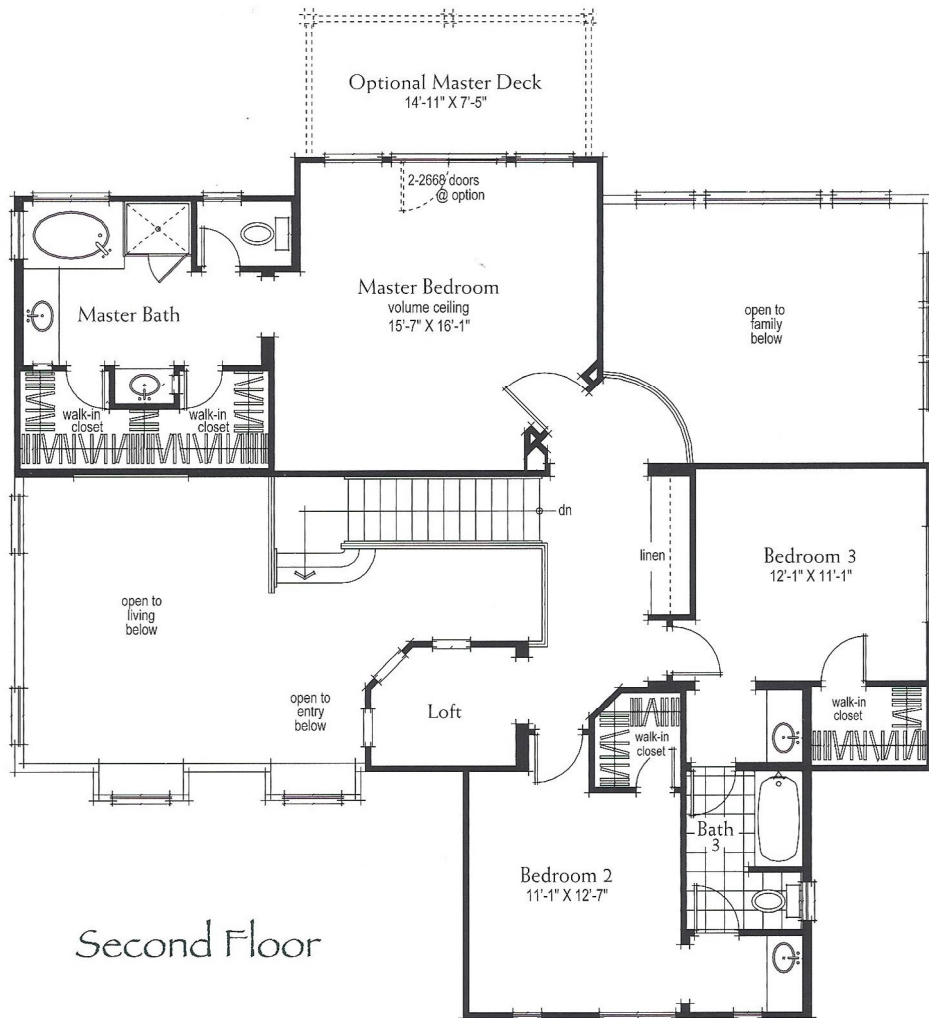
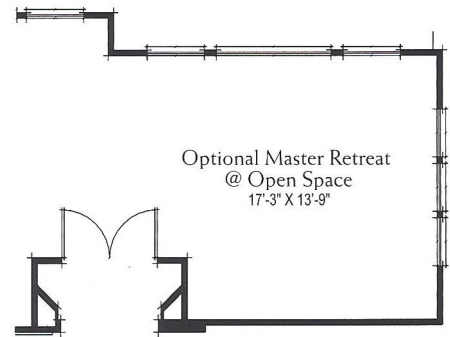
Elevation B



Rosewood



Elevation C



Second Floor