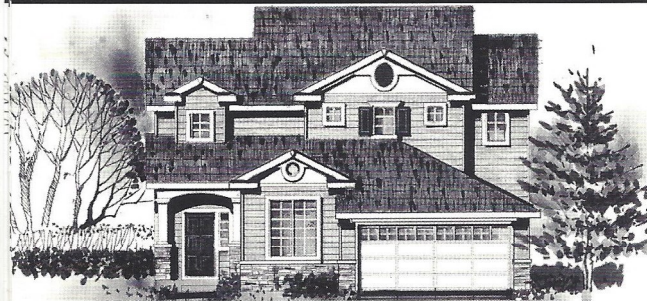


Windom Plan 405

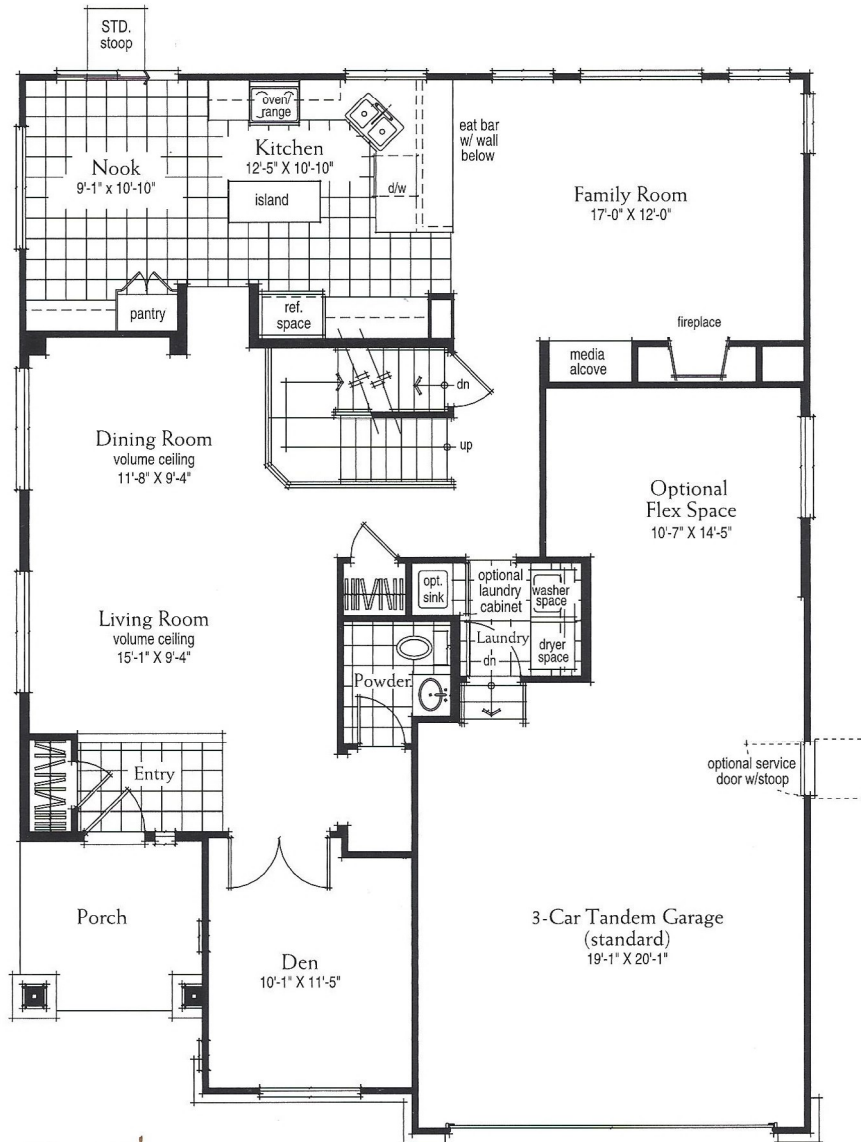
SQUARE FOOTAGE

Total: 2,100 Basement: 914 Optional: 203

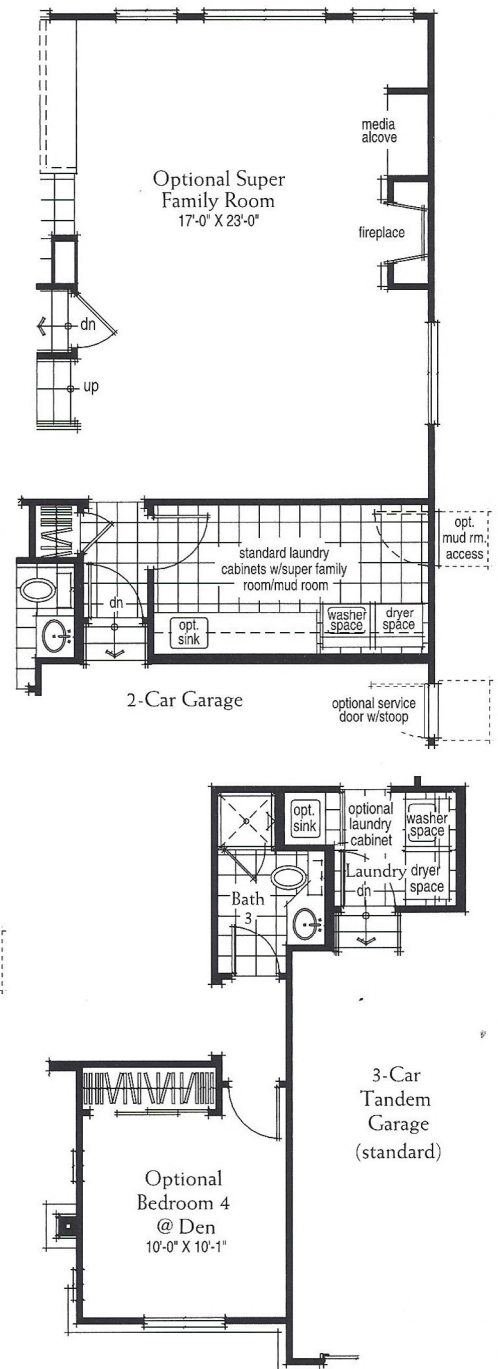
This breathtaking 2,100 square foot home greets you with volume ceilings, natural light, and 9-foot ceilings throughout the main floor. The standard main level den options into a fourth bedroom, while the family room options into a fourth bedroom, while the family room options into a super family room and mud room. The standard island kitchen and fireplace enrich this lovely home. The 5-piece master bath and two walk-in closets highlight a spectacular master suite.



Elevation A

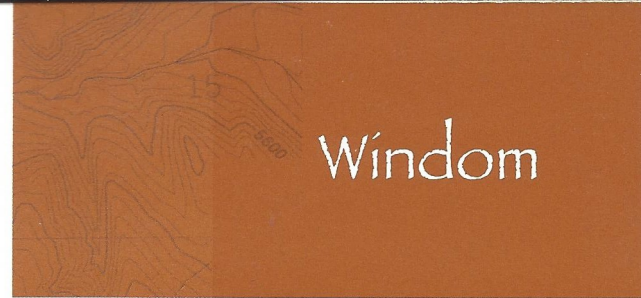


First Floor

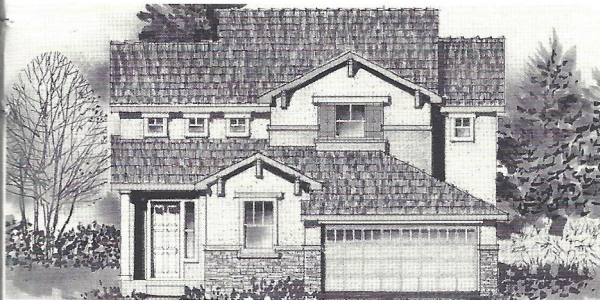




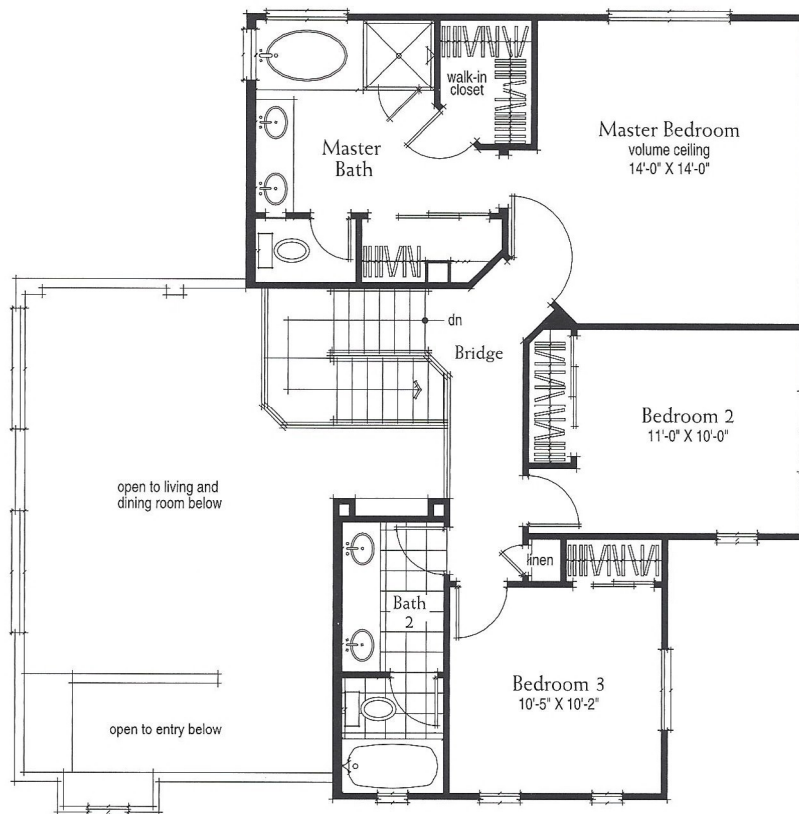
Elevation B



Windom



Elevation C



Second Floor

Windom

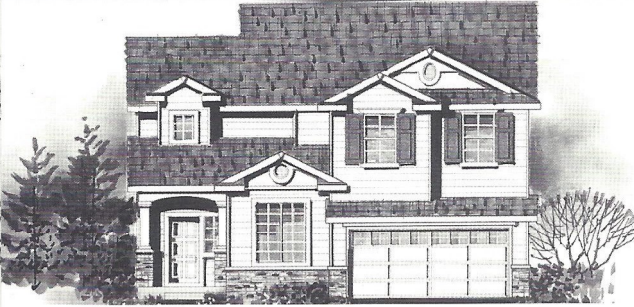
(with Optional Bonus Room)

Plan 405 Bonus

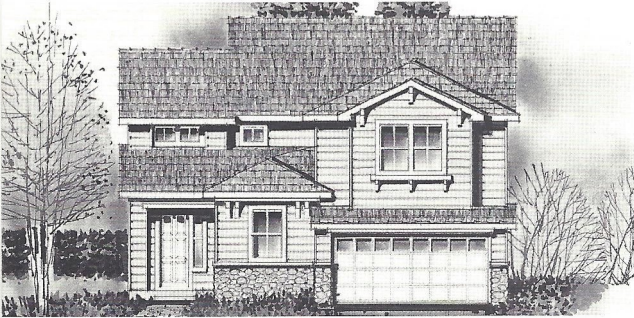
SQUARE FOOTAGE

Total: 2,417 Basement: 914 Optional: 203-520

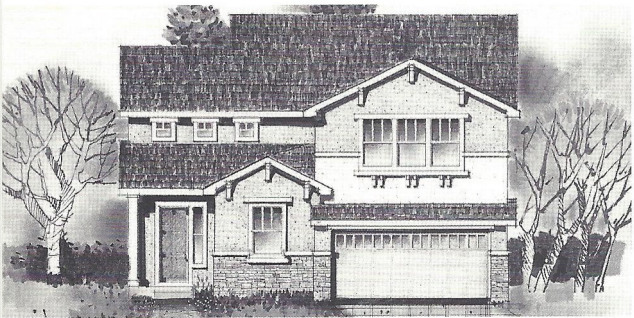
Receive the same spectacular features as the Windom, as well as the option for a remarkable 317 square foot bonus room upstairs.



Elevation A



Elevation B



Elevation C

